



The River, OS Version 1.50, Installation

September 2018

The installer only runs on Windows. Exclusive users of Mac OS, it will be necessary to make you lend a computer under Windows;) If this is a problem for you, I have at your disposal a configured laptop that I can send you and that you will return after updating. Contact me by email in this case.

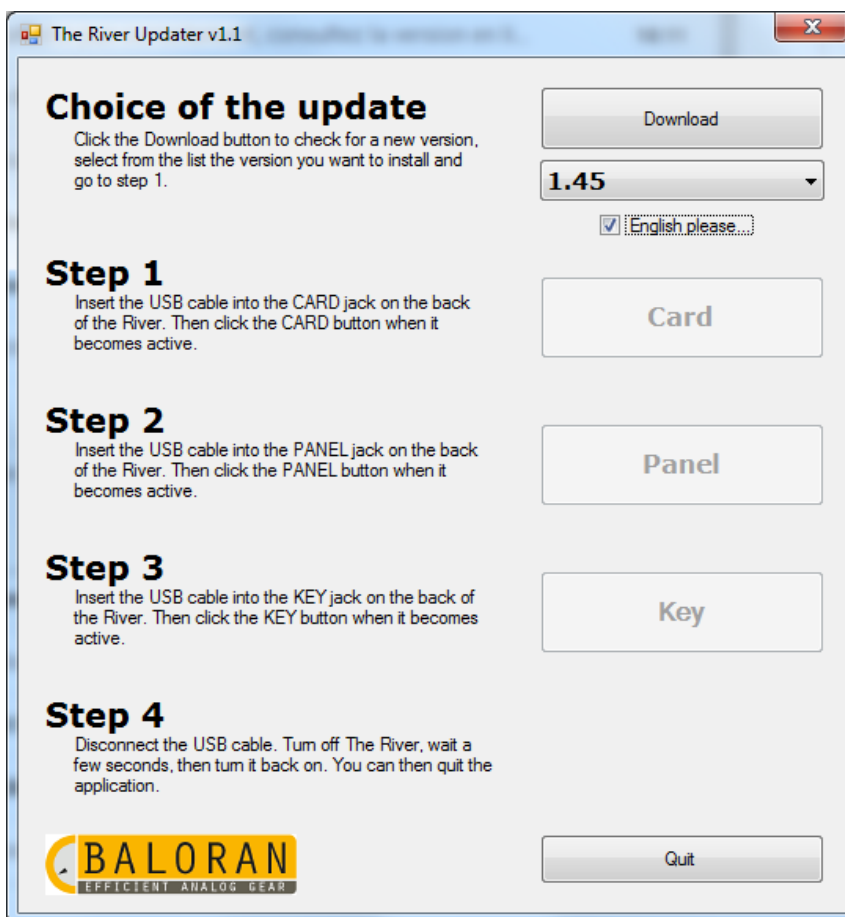
Download the following file

<http://www.baloran.com/TheRiver/TheRiverUpdater.zip>

and unzip it in the folder of your choice, for example **C: \ MAJTHERIVER**

*I advise you now to **disable temporarily your antivirus**, one of the program , very clean, is sometimes treated as a virus and causes the update to fail ...*

In the created folder, run **TheRiverUpdater.exe** and check **english please ;)**



The first time, click **Download**, this should allow to load the latest version (**1.50**). Then, follow the instructions of the program;)

During the update of **CARD**, you should have, for 30 seconds, a window "command line" with two progressions bars with roughly this contents at the end ...

```
The River Card Update
Please wait, do not close this window ...
Atmel SMART device 0x285e0a60 found
Erase flash
done in 0.031 seconds

Write 71680 bytes to flash (280 pages)
[=====] 100% (280/280 pages)
done in 13.762 seconds

Verify 71680 bytes of flash
[=====] 90% (252/280 pages)
```

During the update of **PANEL** or **KEY**, you should have, for ten seconds, a window "command line" with roughly this content at the end ...

```
Please wait, do not close this window ...
upload @ 2955860-Teensy Uploading to board '2955860-Teensy'
upload @ 2955860-Teensy Triggering reboot
upload @ 2955860-Teensy Firmware: riverpanel_150.hex
upload @ 2955860-Teensy Flash usage: 198 kiB (77.0%)
upload @ 2955860-Teensy Uploading ... 57%gets
```

If it stuck on "Please wait, do not close this window ..." then there is a problem.

Finally, check the version on The River.

On The Riverkey

Press the left encoder and without releasing it turn to **GLOBAL Setup**. Release the encoder and turn it to the right until the display shows "V 1.50 >> No". IF it shows another version, it's a problem. We must start again.

On The River

Press "**S**" and simultaneously **System**. Turn the left encoder to the right to display **About** then press the encoder. It should display the versions of **Panel** and **Card** (v1.50 / v1.50). If it displays other versions is that there is a problem. We must start again.

*and do not forget to **reactivate your antivirus** after leaving this application ;)*

In case of problems or error message

Drag the right edge of the window to enlarge it and show other information that you will communicate to me for CARD, PANEL and KEY (screenshots etc ...);)

